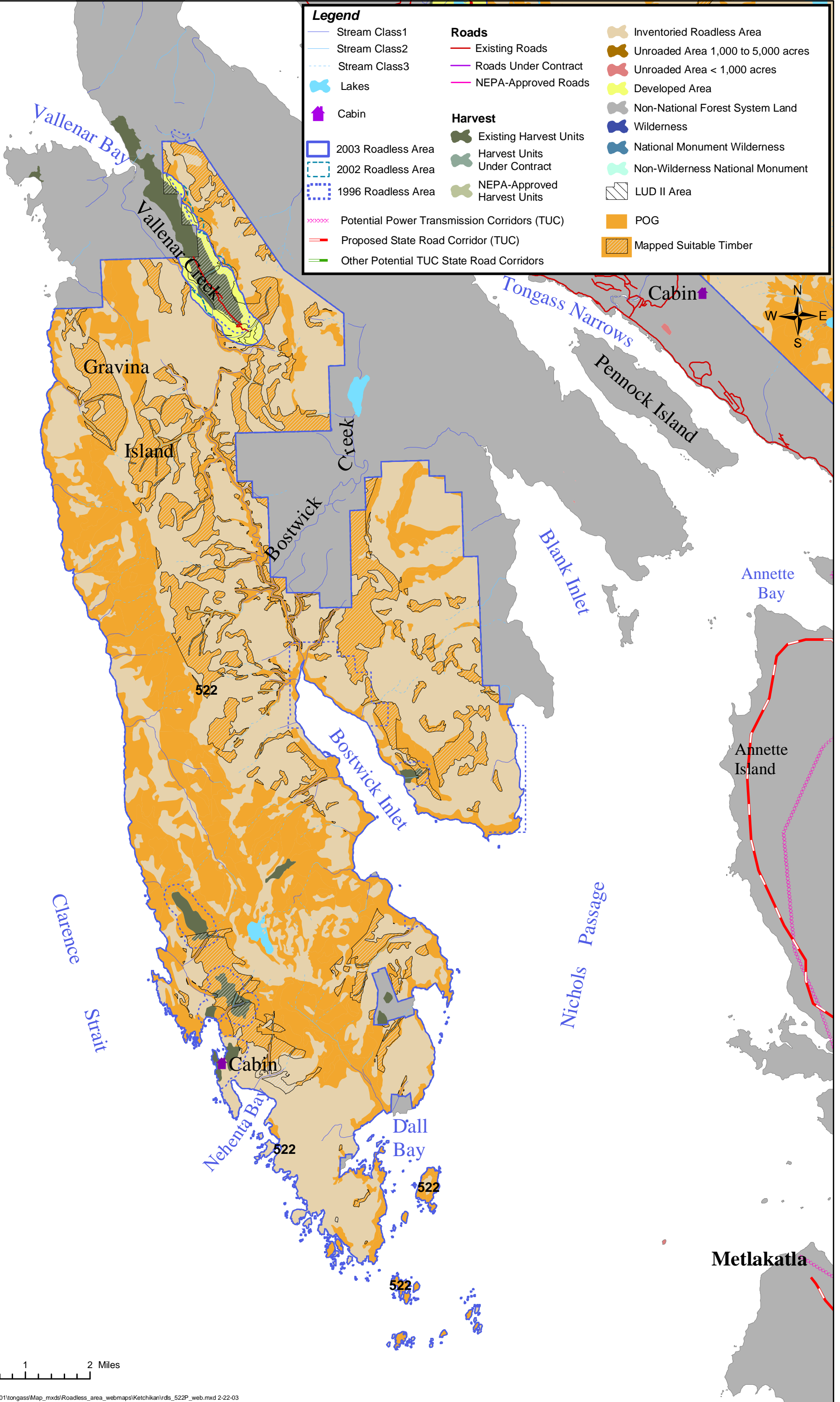


**Legend**

- Stream Class1
  - Stream Class2
  - Stream Class3
  - Lakes
  - Cabin
  - 2003 Roadless Area
  - 2002 Roadless Area
  - 1996 Roadless Area
  - Potential Power Transmission Corridors (TUC)
  - Proposed State Road Corridor (TUC)
  - Other Potential TUC State Road Corridors
- Roads**
  - Existing Roads
  - Roads Under Contract
  - NEPA-Approved Roads
- Harvest**
  - Existing Harvest Units
  - Harvest Units Under Contract
  - NEPA-Approved Harvest Units
- Inventoried Roadless Area
  - Unroaded Area 1,000 to 5,000 acres
  - Unroaded Area < 1,000 acres
  - Developed Area
  - Non-National Forest System Land
  - Wilderness
  - National Monument Wilderness
  - Non-Wilderness National Monument
  - LUD II Area
  - POG
  - Mapped Suitable Timber



0 0.5 1 2 Miles